



Product Catalog

Roof accessories

Aluminum chimneys for ceramic roof tiles

Made of a high-quality aluminum alloy, which guarantees incomparably higher durability and functionality than similar ceramic and plastic products available on the market.

Available profiles:

- Creaton — Titania, Premion, Domino
- Koramic — Alegra 9, Orea 9, Cosmo
- Roben — Monza Plus, Piemont, Bergamo
- Braas — Rubin 9v, Rubin 13V, Turmalin
- Tondach — Holenderka 11, Figaro
- Bogen — Reform 11, Plano

Adjustable angle — to the roofing slope of up to 45 degrees — the chimney will always be in a vertical position, which additionally contributes to the effective ventilation of the building

150 mm in diameter — allowing to connect to ventilation ducts that extract air from kitchens, bathrooms and other living premises, as well as to vent the sewage system

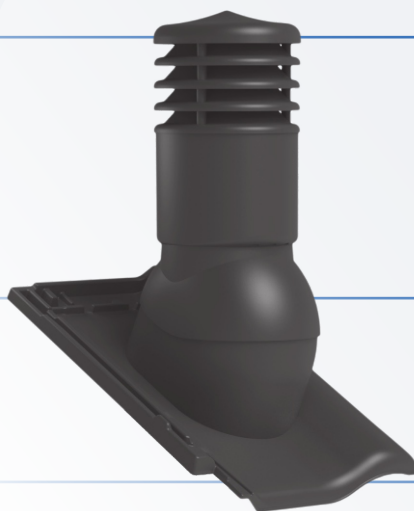
Matching colors — powder-coated product — its color accurately imitates the color and structure of the roof tile coating (engobe, glaze, refined engobe)

Ergonomic and intuitive mounting — easier mounting, as the connecting element is always positioned at a right angle to the roof slope. Convenient stabilization of the chimney position in relation to the roof slope with the use of special drill screws. Mounted on the roof with a single tool — a screwdriver.

Solid, reliable, resistant to damages caused both during transport, storage and mounting

Innovative double condensate extraction system — special openings allow condensate to flow outside the chimney or to the membrane.

Correct height — above 40 cm, uses wind strength to support room ventilation



Rotating chimney cowl for ceramic roof tiles

Efficient extraction of used air, even with short ventilation ducts

Design preventing sucking air and rainwater into the ventilation duct

Condensate extraction system — the condensate is discharged to a membrane and does not return to the ventilation duct

Ergonomic and intuitive mounting — easier mounting, as the connecting element is always positioned at a right angle to the roof slope. Convenient angle stabilization thanks to the use of special drill screws — adapted to contact aluminum. Mounted on the roof with a single tool — a screwdriver.

Using wind support for condensate extraction

Consistent with the roof color — powder-coated to match the roof tile color

Adjustable angle — up to 45 degrees

150 mm in diameter — suitable for ventilating living premises



Ventilation Chimney

Modern and universal design — matching both traditional models of roof coverings and the latest architectural trends

System of levels facilitating an accurate and ergonomic mounting — two levels allow to set the chimney vertically, in a position convenient for the contractor. Correct mounting in two planes — an elegant finishing of the chimney cap.

Condensate extraction system — designed with the focus on temperature differences to prevent material freezing and cracking and to allow ventilation of both “dry” and “wet” rooms with a single chimney



Exhaust pipe mounted at the basis of the chimney — easier mounting of the connector, at a right angle to the roof slope.

Ring shape preventing rainwater from entering the ventilation duct.

Colors matching the most popular roof coverings.

Marked screw fixing positions.

Available with two dimensions — ø 125 and 150 mm

Smartline ventilation chimney

Modern and universal design — matching both traditional models of roof coverings and the latest architectural trends

System of levels facilitating an accurate and ergonomic mounting — two levels allow to set the chimney vertically, in a position convenient for the contractor. Correct mounting in two planes — an elegant finishing of the chimney cap.

Condensate extraction system — designed with the focus on temperature differences to prevent material freezing and cracking and to allow ventilation of both “dry” and “wet” rooms with a single chimney



Exhaust pipe mounted at the basis of the chimney — easier mounting of the connector, at a right angle to the roof slope.

Ring shape preventing rainwater from entering the ventilation duct.

Colors matching the most popular roof coverings.

Marked screw fixing positions.

Available with two dimensions — ø 125 and 150 mm

Available in versions in insulated and uninsulated.

Other new products



Ventilation chimneys and other accessories for Brass Teviva and Tegalit roof tiles



Ventilation chimneys and other accessories for metal roof tiles
— Budmat Rialto, Ferrara, Blach-Pol Mustang

Passage through the membrane

Prevents water from entering the area under the membrane

Simple and intuitive mounting — the top part of the passage is connected to the roof batten, while the bottom part is click-locked to the membrane.

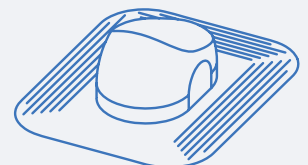
Maintaining the performance of the roof foil — the opening is secured and stabilized on the roof battens to ensure that the membrane is correctly stretched, while not affecting its life.

One product for many diameters — up to 150 mm in diameter.

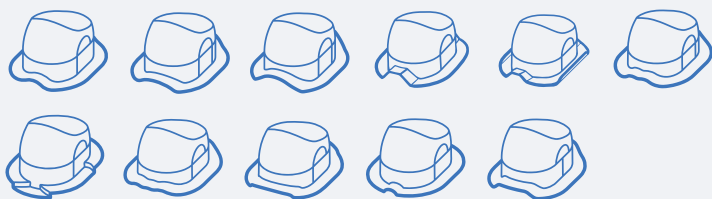


Plastic products for such roof coverings as

Shingles, heat-weldable bitumen roofing systems — for new roof coverings — the basis is a broad sheet fixed under the outer covering (shingles, bitumen roofing systems for outer covering), while the outer covering provides sealing for the basis and the roof covering.

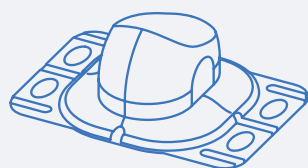
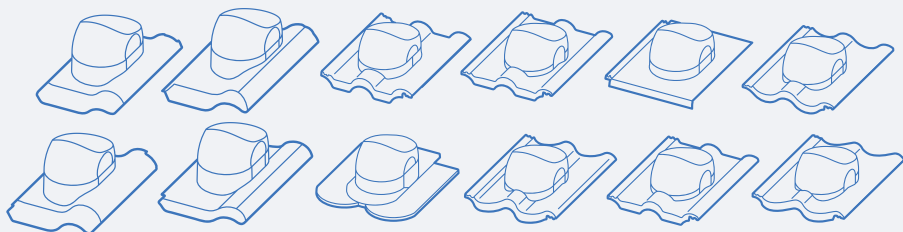


Shingles, heat-weldable bitumen roofing systems (for existing roof coverings) and standing seam profiles with a click-type locking mechanism, trapezoid profiles of various heights subject to appropriate metal sheet processing, sandwich panels, metal roof tiles imitating wooden shingles. The basis consists of a butyl seal that, after being stuck to the covering, is fixed with Farmer screws. Such fixing provides an airtight connection between the covering and the roof passage.



Metal roof tiles — most of the profiles available on the market — the basis is to be adjusted to the height of the tile profile — 8 basis profiles are available. The profile is connected to the metal sheet with a butyl seal and a set of screws.

Concrete roof tiles and flat roof tiles (double lapped tiles) — the basis are plastic roof tiles accurately reproducing the shape of a concrete roof tile — the plastic form is mounted instead of the basic roof tile. A correctly mounted basis is an integral part of the roof slope and provides an airtight connection. The profiles are not equipped with a seal.



Universal profile — used for any type of metal sheet coverings — trapezoid profiles (up to 35 mm trapezoid height) and metal roof tiles. The connection between the passage and the covering is sealed with EPDM rubber that is laid so as to match the shape of the metal sheet, and fixed with screws. Then the sealed opening is covered with a basis — a broad plastic masking sheet that is fixed to the corrugated metal sheet with screws placed at the top of the wave corrugation profile. Using the universal profile allows to mount the passage at any place within the roof slope without the need of any additional metal sheet processing.

Types of roof passages

Uninsulated ventilation chimneys with diameters of 125 and 150 mm — the chimney is a finishing element of the ventilation duct. It is used instead of traditional ceramic chimneys as a more economical solution, both in terms of material and mounting costs. The connection is airtight and guarantees an effective airflow. When this type of a finishing element of a ventilation duct is applied, the ventilation duct can run at any place. Uninsulated chimneys effectively extract used air and humidity from “dry” rooms, such as living rooms, bedrooms and other rooms that are not subjected to conditions of increased humidity.

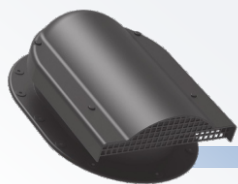


Insulated ventilation chimneys with diameters of 125 and 150 mm — the upper part of the chimney is insulated to prevent the decrease in the condensate temperature and to effectively extract the wet air outside. Insulated chimneys are used to ventilate rooms with increased humidity, such as kitchens, bathrooms and laundry/drying rooms. Using uninsulated chimneys for such rooms can result in condensation in the ventilation duct, which means that the condensate can return to the room.



Accumulation of excessive humidity in rooms and lack of effective ventilation can result in wall dampness in the building, which leads to the growth of mold, thus having a negative influence on the household members' health and psychological well-being. It should be remembered that ventilation works correctly only when air inlets, for example ventilators in the windows, as well as air outlets, such as ceramic or Spiro pipe ventilation ducts, are provided.

Roof slope vents



Used for ventilation of roof slopes and the area between rafters. Roof ventilation has major influence on the durability of the roof covering and the roof-truss, as it protects them against humidity. A roof slope vent effectively ventilates up to 50 sq m of a roof slope.

Solar passages

Provide an airtight passage for cables of solar collector systems or photovoltaic cells.



Antenna passages

Provide an airtight passage for antenna cables and masts, or other elements with a maximum diameter of 75 mm



Rotating chimney cowls

Spherical or elongated — their function is the same as ventilation chimneys, i.e. they are finishing elements of a ventilation duct in a building. A rotating chimney cowl swirls under the influence of the wind, which creates vacuum in the ventilation duct, thus supporting the draft and extracting used air more effectively. In short ventilation ducts (e.g. for attic rooms), as well as in places with specific wind conditions, it is recommended to use chimney cowls. The chimney cowl prevents rainwater from entering the ventilation duct.

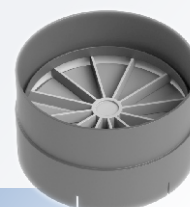


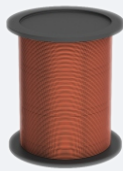
Chimneys with an electric fan

The fan is mounted inside a chimney and it is connected to the electrical installation of the building. When the fan is switched on, it creates a forced draft in the ventilation duct. Its use is recommended mostly in bathrooms to quickly extract water vapor from the room. Air flow — 280 cubic meters per hour. Both insulated and uninsulated chimney versions are available.

Vertical non-return valve

A non-return valve is supposed to prevent wind from blowing into a ventilation duct and creating a reverse draft. It is equipped with a special membrane that allows air to come out freely, while blocking air sucked in from outside. It is not recommended to use non-return valves in ducts extracting air from the kitchen. Grease can cover the membrane, thus blocking the ventilation duct. Available diameters of the non-return valve: 110 and 150 mm.



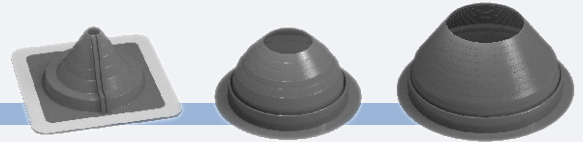


Copper wire

The wire is used to fix roof tiles, especially in places where the mounting of roof tile clips is difficult or impossible, in particular in valley areas or corners. The wire is sold in kilograms; one kilogram is around 140 running meters of wire.

EPDM rubber

It provides secured airtight passage through the roof for antenna masts, wind-driven roof ventilators, roof installations, etc. Three diameter ranges are available: from \varnothing 40 to 100 mm, from \varnothing 75 to 160 mm and from 150 to 280 mm

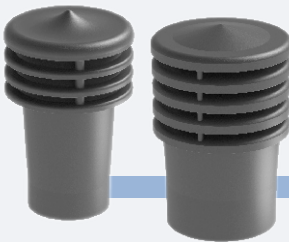


Wind-driven gravity roof ventilators

They are cylindrical ventilation elements, sold without the base (the roof passage).

They are used in recuperators or pre-mounted pipes projecting over the roof. EPDM rubber used as a waterproof element, together with a pipe, can replace a ventilation chimney. The ventilator diameter is the outer diameter allowing to insert it in a pipe of the same diameter.

Available in three colors: brown, black and graphite, and with five diameters: 50, 75, 110, 160 and 200 mm.

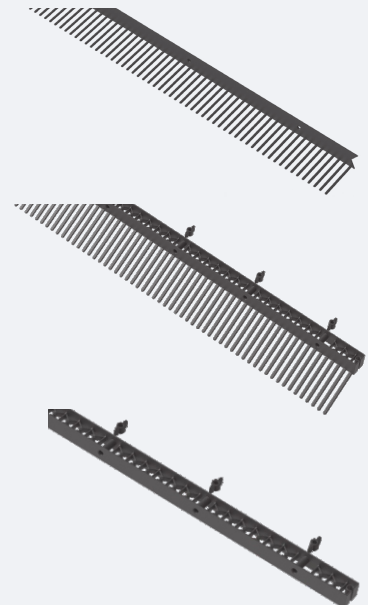


Eaves combs

•Eaves comb with a ventilation grate — apart from preventing birds from entering under the roof slope, the comb is also equipped with a ventilation grate that allows air to get under the roof slope. The grate is set on flanges that make it possible to use rafter hooks without the need to carve grooves in the rafter. Flange height — 1 cm, eaves grate height — 2 cm, teeth length — 60 mm. Available colors: black, brown, brick-red.

Flat eaves comb — mounted at the eaves to prevent birds and small animals from entering under the roof slope, while additionally providing ventilation space. Combs have a length of 1 running meter, while the teeth height is 65 mm; available in three colors: brown, brick-red and black. A comb is made of a high-quality material resistant to high and low temperatures.

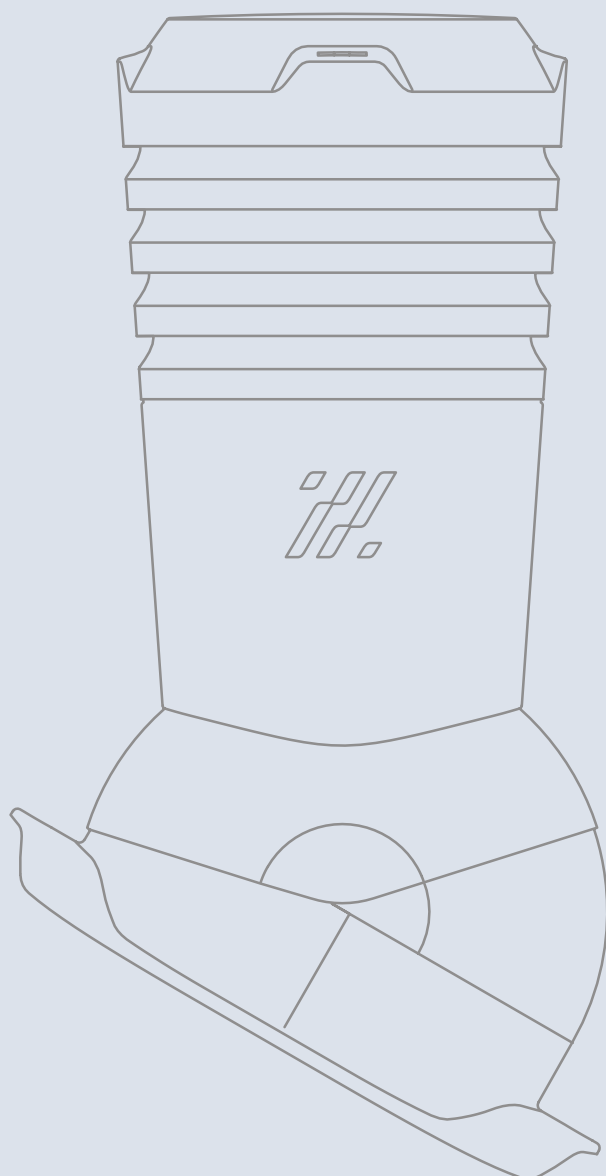
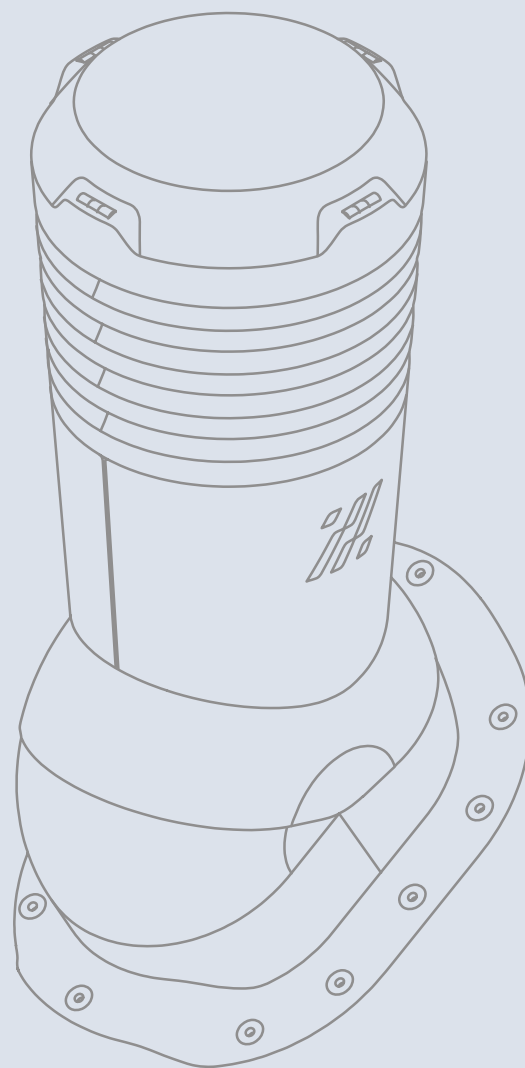
•Eaves grate — a ventilation element without a comb used to let air under the roof slope in order to ventilate it. Available colors: black, brick-red, brown.



Kronoflex Premium



	Diameter	Lenght
Kronoflex	\varnothing 125 / \varnothing 125 mm \varnothing 150 / \varnothing 150 mm	500 mm 1000 mm
Kronoflex Premium	\varnothing 125 mm / \varnothing 125; 110; 100; 75 \varnothing 150 mm/ \varnothing 150; 125	600 mm 1000 mm
Kronoflex Plus	\varnothing 125 mm/ \varnothing 125; 110; 100; 75 \varnothing 150 mm/ \varnothing 150; 125	600 mm 1000 mm



UL. KS. I. SKORUPKI 1
42-100 Kłobuck
WWW.KRONOPLAST.PL
EXPORT@KRONOPLAST.PL